

**BROWN CITY PLANNING COMMISSION
DECEMBER 8, 2005**

Meeting called to order at 7:00 p.m. by Chairman Mike Lents.

PRESENT: Chairman Mike Lents, Commission members: JoAnn Potts, Art Potts, Mike Frey, Todd Vandewarker, Jack Bell, Ken Brown, Gary Abel. City Manager Clint Holmes, City Clerk Kelly Pavel.

ABSENT: Commissioner Leon Blatt.

Moved by Commissioner Brown, second by Commissioner Abel, to accept the November 3, 2005 minutes as presented. Motion carried.

PUBLIC QUESTIONS & COMMENTS: None.

PERSONAL APPEARANCES: None.

OLD BUSINESS:

1. Catholic Church Plans – pending
2. 4245 Maple Street – Request for Variance (Lot size 66' x 111') – Pending.

PUBLIC HEARING:

Chairman Lents opened the Public Hearing regarding a variance request from Brown City Industrial Park at 7:05 p.m.

Brown City Industrial Park representative Keith Muxlow reviewed and explained survey of proposed site. Also discussed future plans for the site.

Discussion regarding existing property, property lines and buildings.

Public Hearing closed at 7:20 p.m.

Moved by Commissioner Bell, second by Commissioner Brown, to recommend that City Council approve variance request from Brown City Industrial Park. **ROLL CALL VOTE:** J. Potts-yes, A. Potts-yes, Frey-yes, Vandewarker-yes, Bell-yes, Brown-yes, Abel-yes, Lents-yes. 8-yes, 0-no, 1-absent, 0-abstain. Motion carried.

Discussion regarding 3rd Street church which is being occupied by residents.

PETITIONS AND COMMUNICATIONS: None.

REPORTS AND RECOMMENDATIONS:

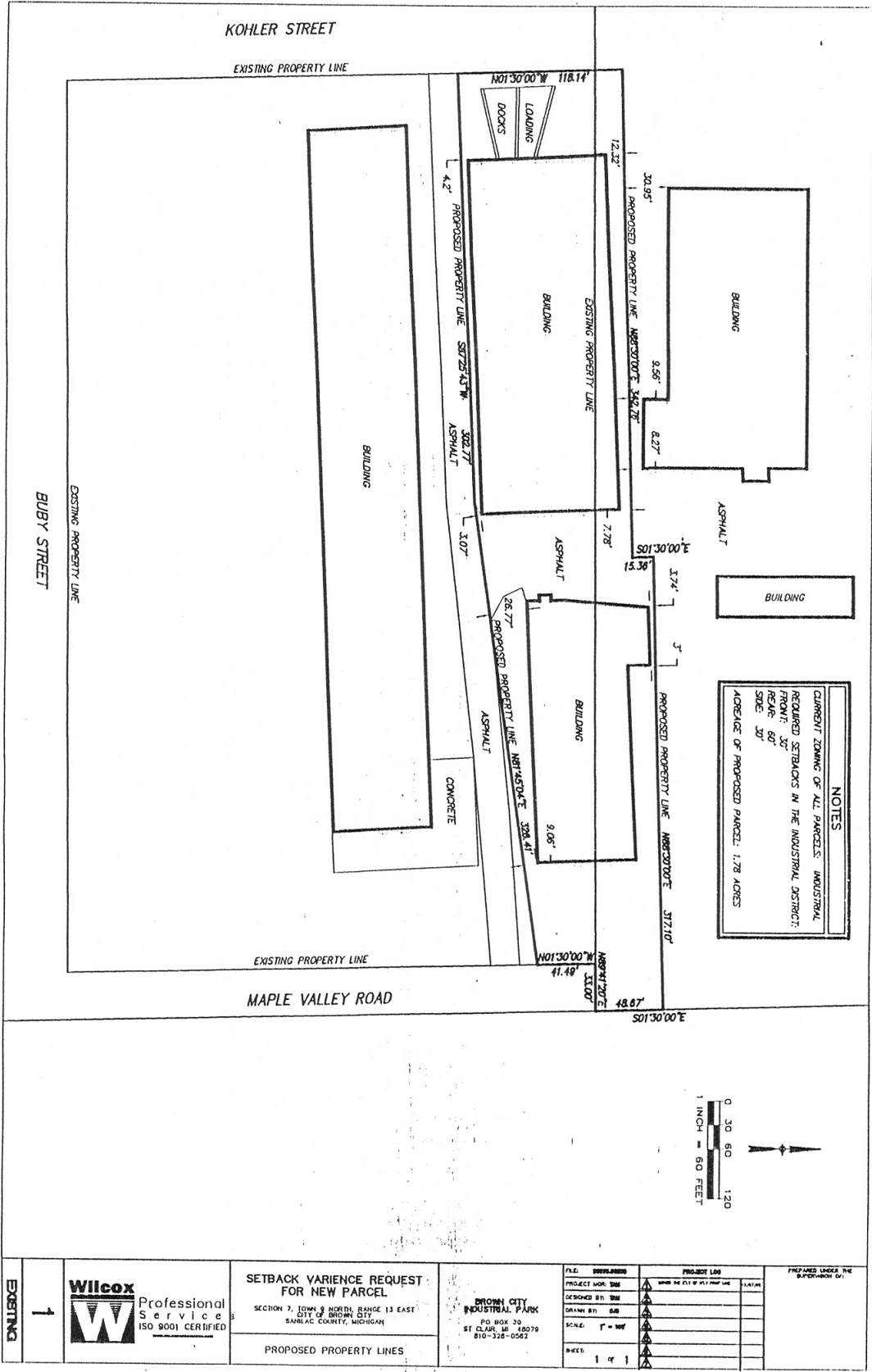
Chairman Mike Lents resigned from his Planning Commission Chairman position due to his recent election to City Council. Chairman Lents recommends that a new Chairman and Vice Chairman be appointed. Mr. Lents expressed his enjoyment working with Planning Commission members and thanked all involved.

Moved by Commissioner Abel, second by Commissioner Brown to appoint Todd Vandewarker as Planning Commission Vice Chairman. Motion carried.

Moved by Commissioner J. Potts, second by Commissioner Abel to adjourn at 7:30 p.m. Motion carried.

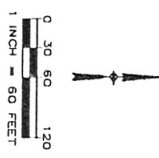
Respectfully submitted,

Kelly Pavel
City Clerk



NOTES

CLARIFIED ZONING OF ALL PARCELS. INDUSTRIAL
 REQUIRED SETBACKS IN THE INDUSTRIAL DISTRICT:
 FRONT: 35'
 REAR: 60'
 SIDE: 30'
 ACREAGE OF PROPOSED PARCEL: 1.78 ACRES



EXISTING 1	Wilcox Professional Service ISO 9001 CERTIFIED	SETBACK VARIANCE REQUEST FOR NEW PARCEL	BROWN CITY INDUSTRIAL PARK PO BOX 10 ST CLAIR MI 48078 810-326-0562	FILE: 00000000	PROJECT LOG: 000	PROJECT LOG: 000	PREPARED UNDER THE SUPERVISION OF:
		SECTION 7, TOWN 9 NORTH, RANGE 13 EAST CITY OF BROWN CITY SANILAC COUNTY, MICHIGAN		DESIGNED BY: TBE	DRAWN BY: GAB	SCALE: 1" = 60'	
PROPOSED PROPERTY LINES							